

ALPTOP

Wire-Free Rechargeable HD Smart Security Camera

AT-A3 Quick User Guide



Place it Anywhere, Watch on Phone Anytime

Warranty Service

Thanks for your shopping and trust.

If you have a good experience with our product, please leave us a review. We will optimize your purchase experience as much as we can and provide an excellent lifetime online service.

.....

If you meet any problems in using our product, please contact with us **SOON** by email as below. We will supply a best solution for you to solve any problems in **24 Hours**. Any advice will be collected and we'll do our best to improve.

.....

Register via below link to get **3 Years Warranty Extension**

<https://form.jotformeu.com/92018442287357>

For Product Service:

support@alptopsecurity.com

For Distributor:

market@alptopsecurity.com



If this manual is not clear enough to read, please download via our website:

www.alptopsecurity.com

➤ Package Contents.....	P1
➤ Product Diagram.....	P2
➤ Install CloudEdge APP.....	P3
➤ Register Account.....	P4
➤ How to Add Camera to APP.....	P4.5.6.7
1. Install Micro SD Card.....	P4
2. Power on Camera.....	P4
3. Wi-Fi Setting.....	P5
4. APP Setting.....	P5.6.7
➤ Device Manual.....	P8.9
➤ P2P Sharing.....	P9
➤ Body Detection Setting.....	P10
➤ Alarm Notification and Playback.....	P10.11
➤ Camera Installation.....	P11
➤ Important Notes.....	P12
➤ Appendix.....	P13
➤ FAQ.....	P14

Package Contents

Package List



Camera



USB cable



Iron ball wall mount



User manual



Adhesive tape

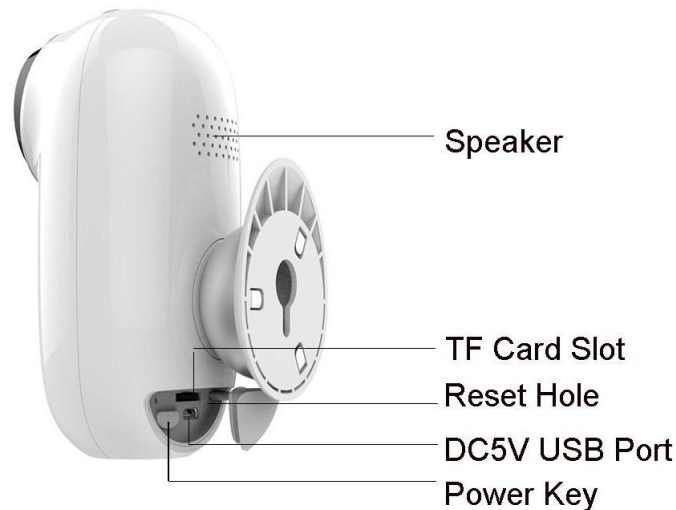
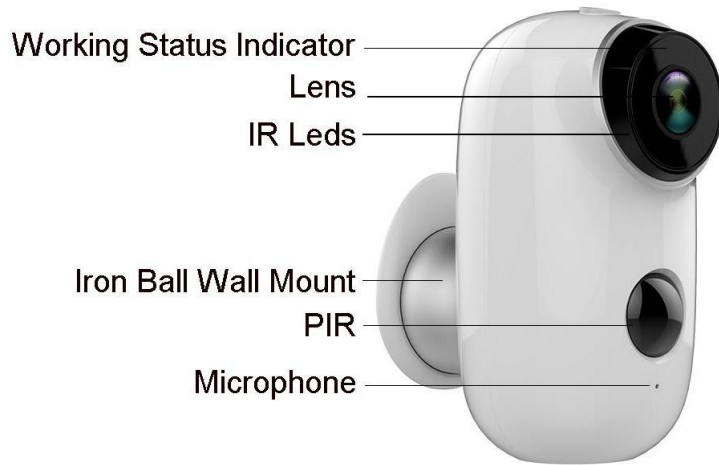


Reset pin

Screw

- Battery Camera * 1
- Iron Ball Wall Mount * 1
- Quick User Guide * 1
- Double-Sided Adhesive * 2
- Screws Set * 1
- USB Cable * 1
- Free Outdoor Bracket * 1

Product Diagram



No.	Camera key	Operation
1	Power Key	Press and hold for 5 seconds to power on/off
2	Power Key	Quick press 1 second to wake up the camera from standby mode
3	Reset Hole	Press and hold for 5 seconds, it will reset and restart

Install CloudEdge APP

Search “CloudEdge” in App store or Google Play store, or scan below QR Code to download and install on smart phone.



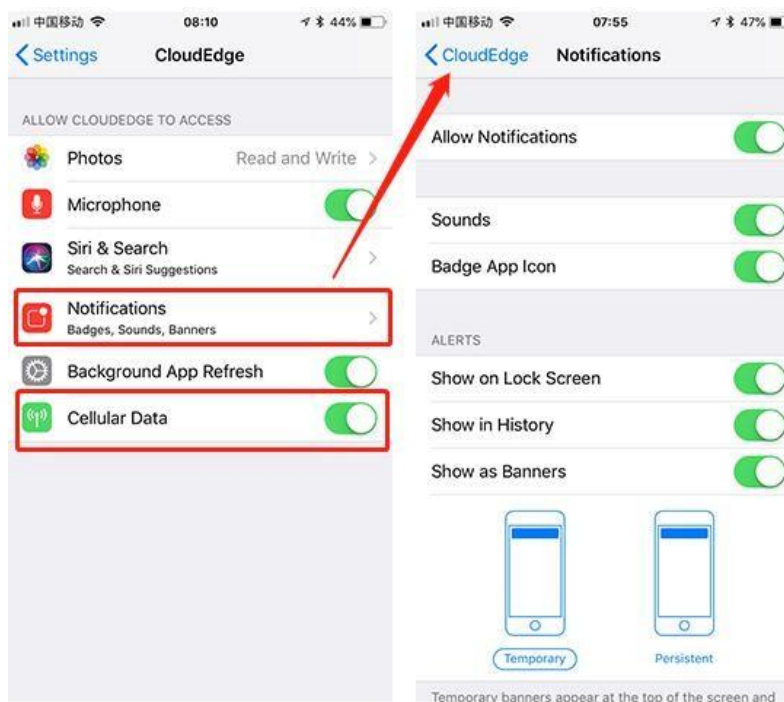
For IOS



For Android

***Tips:** Please **ALLOW** below 2 permissions when use this App at first time .

1. Allow CloudEdge use mobile cellular data and wireless LAN (Function: If not allowed, it will be failed to add IP camera).
2. Allow CloudEdge to get system push message permissions (Function: When the camera triggers motion detection or audible alarm, the phone can receive alarm push).



Register Account

New users need to register by e-mail, click "Register", follow the steps to complete the registration of the account, and log in.

How to Add Camera to APP

1. Install Micro SD card

Please insert Micro SD card to record videos when motion detected and playback. (Micro SD card is not included, it supports 128GB Max.)

***Tips:** Please insert the MicroSD card **BEFORE** Power On, otherwise, the SD Card cannot be detected.

2. Power on Camera

Press the Power Button for 5 seconds to Turn on Camera (If cannot power on, please plug in DC 5V 1A/2A phone adapter to charge 15min first). **Power adapter is not included.**



**Indicator
Slowly
blinking
in red**



***Tips:** Ensure the indicator light slowly blinking in RED before setup Wi-Fi

3. Wi-Fi Setting

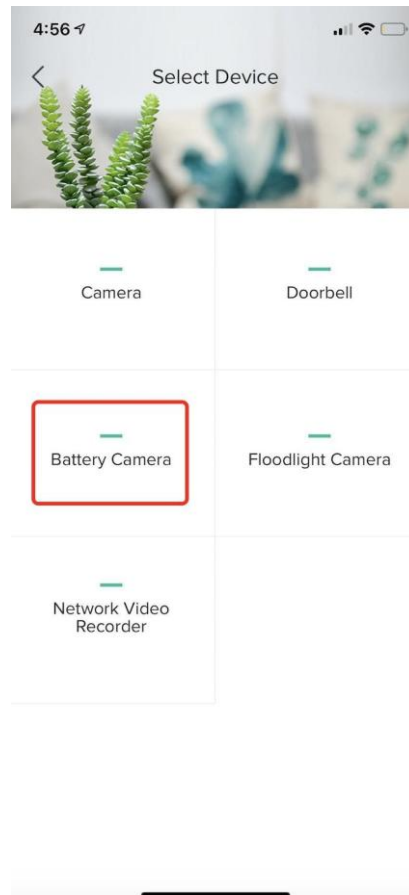
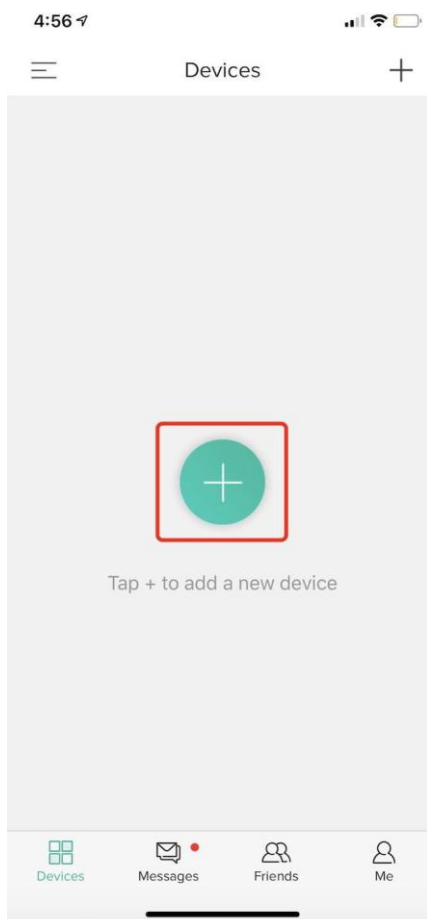
Put the camera and smart phone 1 to 3 feet (30 to 100 cm) away from the router to set W-iFi



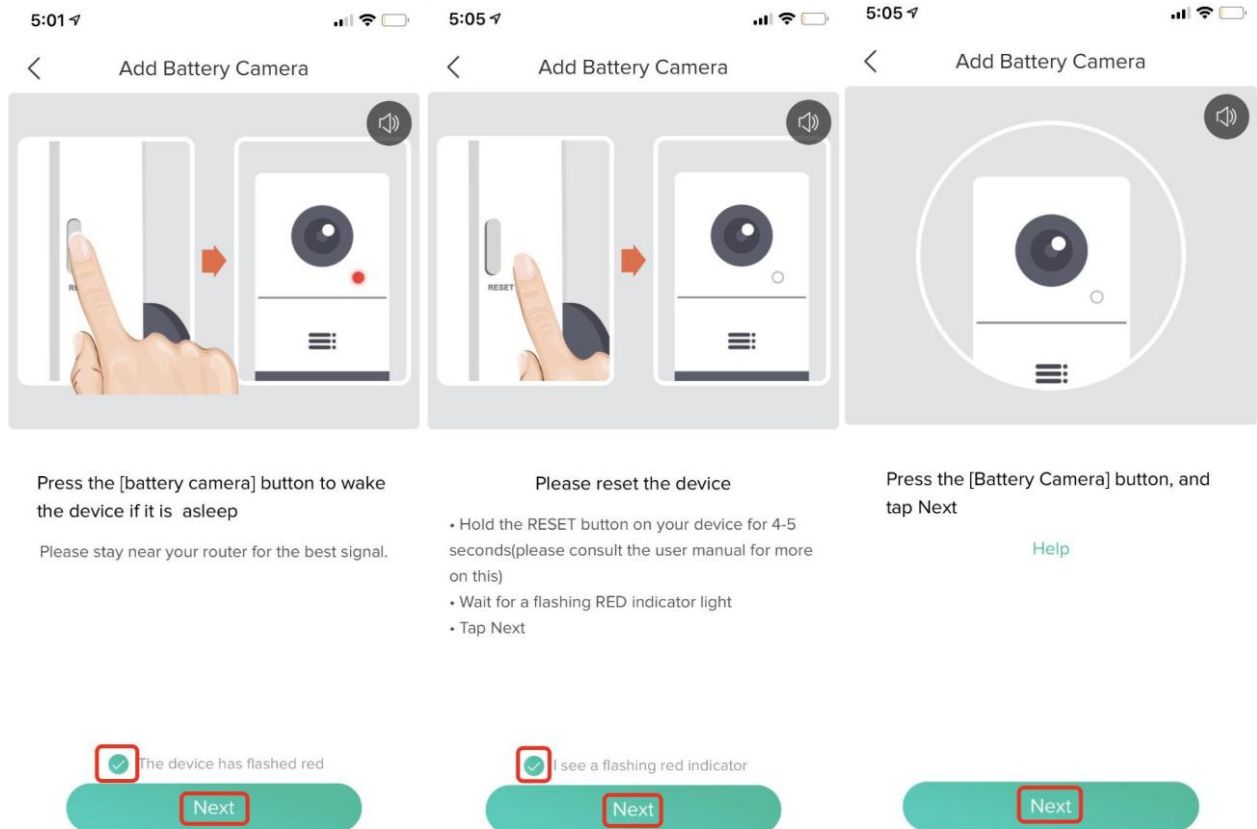
***Tips: Please note camera only works under 2.4G Wi-Fi, not supports 5G Wi-Fi.**

4. APP Setting

4.1 Open CloudEdge App, Click  and select “Battery Camera”.



4.2 Select “The device has flashed red” and tap “Next” for below 3 Steps.



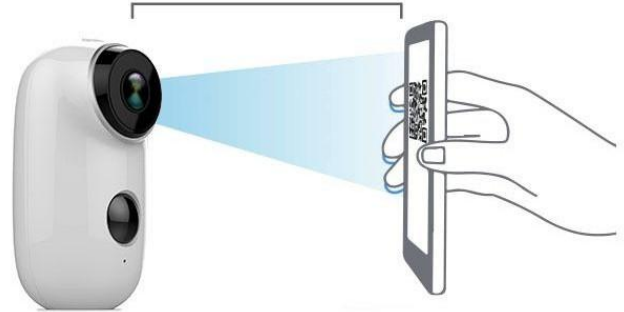
4.3 Select 2.4Ghz Wi-Fi SSID and input password, tap NEXT



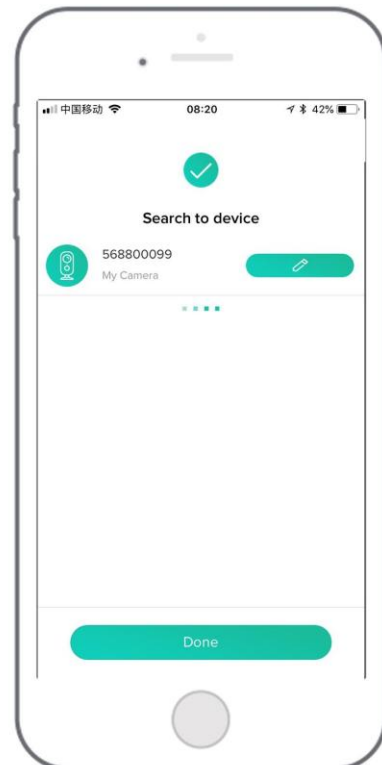
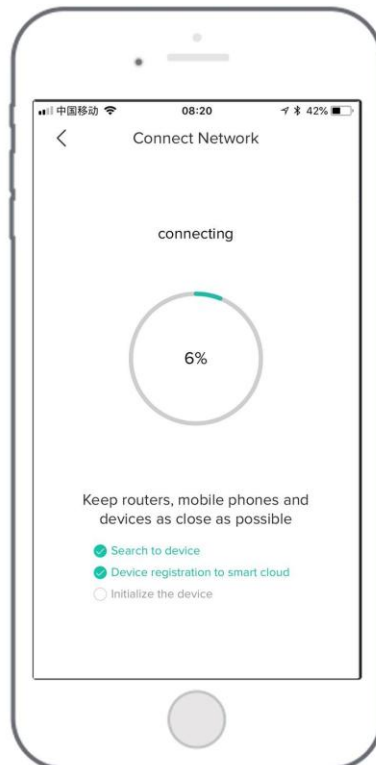
4.4 Put the QR code in front of the camera lens about 15cm.

The device lens is aimed at the QR code on the phone screen with a distance of 15 cm. After the device recognizes the QR code, it will sound "Boogu", after heard it, then tap "Hear Tone".

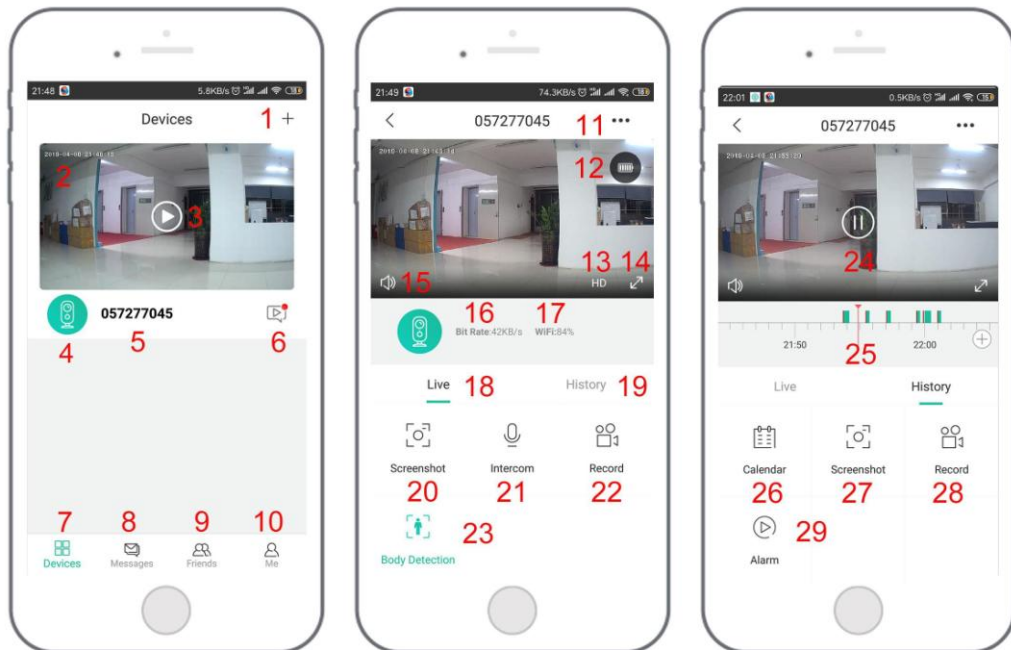
Distance in 15cm (4.9 inches)



4.5 After click "Hear tone", camera will start connecting WI-FI and skip to "Search to Device" page, after setup finished, you can edit camera name here, then click "DONE" to open camera in My Device list, now you can watch real-time video.



Device Menu



1. Add a camera	16. Bit rate
2. Camera time	17. Network signal strength
3. Live view button	18. Live view options
4. Camera type icon	19. Local playback options
5. Camera name	20. Screen Shot button
6. Alarm information icon red dot indicates alarm occurs, click to view alarm screen shot or video	21. Intercom option, long press it and then can talk
7. My device list	22. Record button
8. Message options	23. Human body detection option, green is activated, default is on, and it is detected by human body infrared detection.
9. Friend Options	24. Alarm video, click on it to play/pause
10. Personal homepage	25. Video Stripe, Red indicates the alarm time point; green indicates video recording after alarm

11. Camera settings options, such as alarm Micro SD Card, etc.	26. Calendar option, click on it to select the date
12. Battery capacity	27. Screen shot options
13. Video “SD”, “HD” options	28. Recording options
14. Full Screen option	29. Alarm time point, click to quickly preview the time point when the alarm event occurs
15. Sound Option(Sound On/Off)	

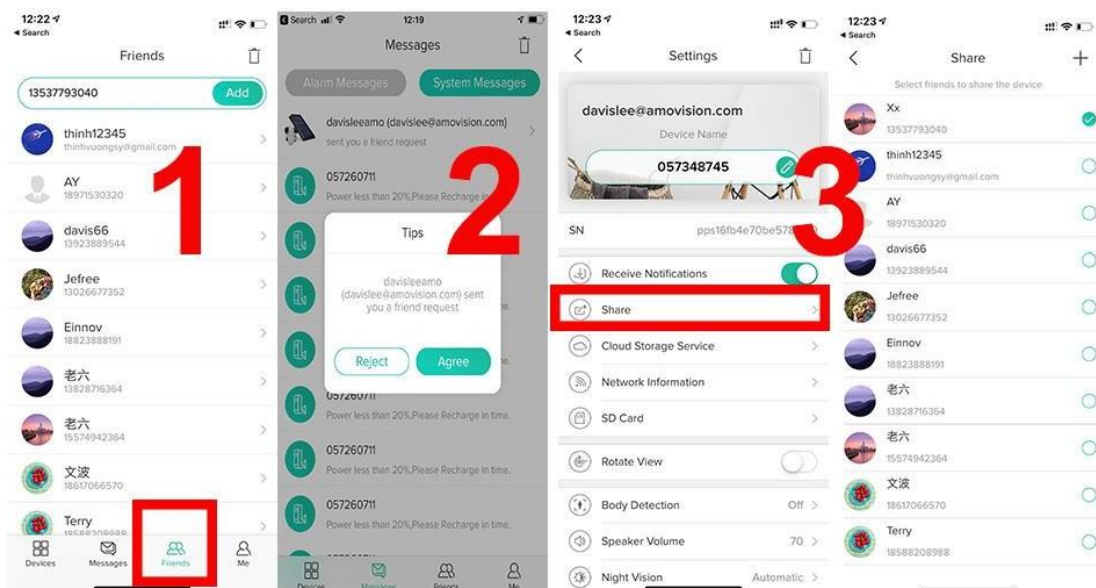
P2P Sharing-Person to Person

Step 1--Add your Friend’s account in app

***Tips: Ensure Friend’s account already registered in CloudEdge app**

Step 2--Friend Agree to add request

Step 3--Share video to your Friend’s account



Body Detection Setting

PIR “Body Detection” default setting is “Mid”, the detecting distance is 6 meters (20ft), it is adjustable in “My Device” -> “Device Settings” -> "Body Detection".

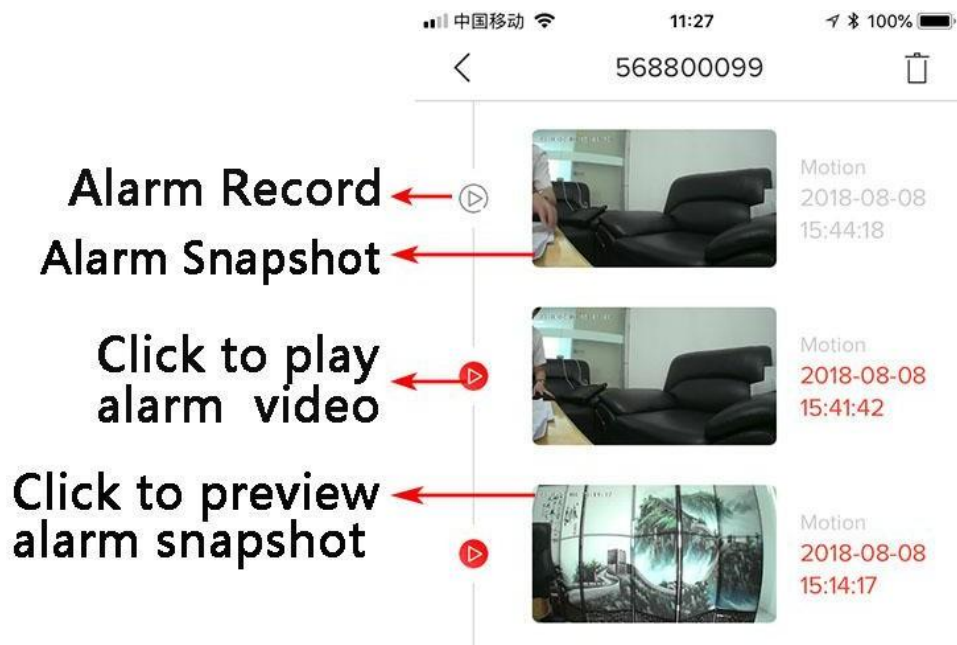
Sensitivity	Detecting Distance (For moving and living things)
Low	Up to 4 meters (13ft)
Medium	Up to 6 meters (20ft)
High	Up to 8 meters (26ft)

Alarm Notification and Playback

Battery camera with PIR sensor is not designed for 7X24 all day recording, but just push alarm message notification to phone APP and record video to Micro SD Card when PIR sensor detected human body motion events, then you can playback the motion videos wherever you are via CloudEdge App.

When PIR is triggered, camera and system actions:

1. Alarm Sound in app (Please enable Cloudedge APP notification in mobile setting and also mobile volume is on)
2. Alarm Message Notification (Please enable Cloudedge APP notification in mobile setting)
3. Alarm snapshot and video record on Micro SD Card (Please insert Micro SD Card)



Camera Installation

You can put it on any flat place: Table, Chair, Floor, etc.

How to Install with Wall Mount:

Fix the iron ball bracket to the wall with screws or double-sided adhesive, and then magnetize the camera to the iron ball. Installation is very convenient and also easy to adjust the angle.

***Tips:** Please make sure your wall surface is flat and no dust, please clean it before you stick the wall mount. If the wall surface is not smooth, we suggest you use the wall mount with screws instead of the magnetic mount.

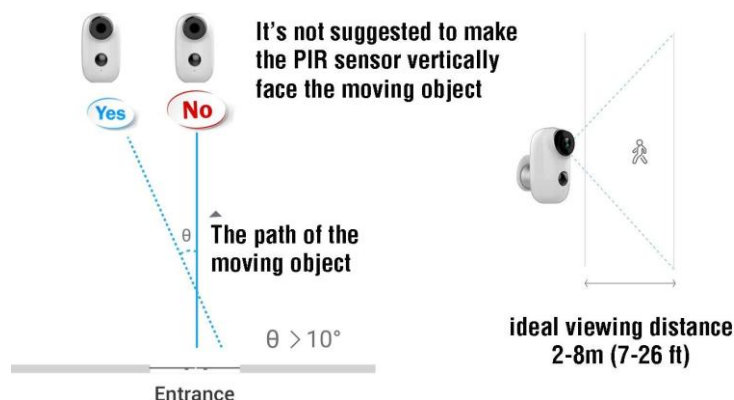
Important Notes for Reducing False

To reduce false alarms, please note that:

- Do not install the camera facing any objects with bright lights, including sunshine, bright lamplights, etc.
- Do not place the camera too close to a place where there frequently moving vehicles. Based on numerous tests, the recommended distance between the camera and vehicle is 15 meters (55ft).
- Stay away from the outlets, including air conditioner vents, humidifier outlets, the heat transfer vents of the projectors, etc.
- Do not install the camera facing the mirror.
- Keep the camera at least 1 meter away from any wireless devices, including Wi-Fi routers and phones, in order to avoid wireless interference.

Cover the Monitoring Area

When installing the camera, it's not suggested to make the PIR sensor vertically face the moving object, otherwise it may not detect the motion events. It is suggested to make the angular between PIR sensor and detected object larger than 10 degree.



Appendix

LED Status Description and Troubleshooting Sheet

No.	LED Status	Camera Status
1	Slowblinking Red	Awaiting WiFi Connection
2	Fast blinking Red	WiFi Connecting
3	Solid on Red	Network is abnormal
4	Solid on Blue	WiFi Connected

No.	Description	Solution and operation
1	Unable to connect	1) Check your Wi-Fi name and password 2) Ensure your Wi-Fi is 2.4G, not support 5G 3) Ensure your camera and phone close to router
2	Reset	1) Press and hold the reset button for 5 seconds 2) Hear one "Boogu" sound 3) Red light turns to slow blinking
3	Change to a new Network	1) Press reset key to factory default setting 2) Re-connection
4	Failed to add Device	Please enable CloudEdge app cellular data on in mobile settings
5	No Alarm Push	Please enable CloudEdge app notification in mobile settings
6	No Alarm Video Record	Please insert Micro SD Card

FAQ

1, This Wireless Camera does not support PC Browser and Software.

2, This Wireless Camera does not support 5G Wi-Fi.

3, Video Playback works in Cloudedge APP ONLY, it does not support the 3rd party player.

4, Manually snapshot and recording files save in Mobile; Events snapshot files save in Cloud; Events recording files save in Micro SD Card.

5, This Wireless Camera charger supports DC 5V 1A/2A Plug.

6000mAh fully charge by USB cable: 8 Hours

6000mAh fully charge by DC Power Adapter: 4 Hours

6, How to delete the photos and videos?

Select "Me" ---- "Pictures & Video" ---- Selected --- Delete

7, How to talk to camera or listen to the camera?

Hold the Intercom key to talk to, and enable the audio key on then you can listen to the camera.